

Boylston Black Box



PROJECT OVERVIEW



OUR MISSION: *to present liberating art by, for, and about queer and trans people of color that transcends artistic boundaries, celebrates cultural abundance, and dismantles oppression.*



Background on The Theater Offensive

In 1989, The Theater Offensive (TTO) grew out of the queer guerilla street theater troupe, United Fruit Company, founded by Abe Rybeck and other activists in response to increasingly conservative national politics and the HIV/AIDS crisis.

Since then, TTO has become the leading presenter of LGBTQ theater in New England, and a national model for advocacy and creation of original works by queer and trans artists.

The Black Box Project at 1252 Boylston Street

TTO has an exciting opportunity to expand upon its three-decade legacy as a trailblazing art, educational, and social action organization.

Through a partnership with Scape North America, an international developer that delivers innovative urban living solutions, and the City of Boston, TTO has been offered ownership of a 13,000 square foot Black Box Theater within Scape's Boylston Place development in the Fenway district.

This iconic, innovative, and enduring space will serve as the cultural cornerstone of a mixed-use development at 1252-1270 Boylston Street.

A Black Box Theater Like No Other









Project Details

Anticipated to open in 2022, TTO's Black Box will be **the largest theater in the world owned and operated by LGBTQ people of color for all LGBTQ people, their allies, families and friends.**

- Massachusetts has very few cultural organizations that are run by people of color and none owned and operated by queer and trans people of color.
- TTO has the opportunity and acumen to build the first institution of this kind in the state and one of the very few in the world.
- TTO intends to deliver a world-class institution that will become a beacon for communities who have long been underserved in our society.



Project Details (con't)



In the new 13,000 square foot, 150-seat Black Box Theater, TTO intends to program and operate:

- an accessible space for artistic experimentation, expression, and public discourse in service to the Fenway neighborhood and greater Boston communities.

The theater will feature:

- multipurpose spaces to accommodate rehearsals, educational programming, and community activities, as well as some dedicated space for TTO's administrative team.

In addition to helping expand TTO's own programs and presentations, the new venue will:

- honor the site's historical importance to the Boston LGBTQ community, providing much needed space and resources to historically marginalized communities seeking affordable facilities for their programs and services.

Project Details (con't)

Long-Term Organizational Impact of a Permanent Artistic Home

This major capital project, TTO's first, will establish a creative hub for thought-provoking programs — a permanent home for queer and trans artists and youth who have long sought a place to truly belong in the center of Boston, including:

- Family, educational and youth-centered artistic and leadership programs
- Community-led artistic experiences
- People-powered civic engagements

Why Now?

As an established and thriving organization, TTO will aid in creating a sense of stability by acting as a conduit for maintaining, growing, and defining the culture of the Fenway and adjacent neighborhoods.



PROJECT

THE THEATER OFFENSIVE

AT 1252-1270 BOYLSTON STREET BOSTON, MA

SCHEMATIC DESIGN

October 23, 2020



CLIENT

The Theater Offensive
565 Boylston Street
Boston, MA 02116
617-661-1600
www.thetheateroffensive.org

OWNER'S PROJECT MANAGER

Anser Advisory
98 Magazine Street
Boston, MA 02119
617-445-3555
www.anseradvisory.com

ARCHITECT

Epstein Joslin Architects
12 Eliot Street
Cambridge, MA 02138
617-868-1766
www.epsteinjoslin.com

INTERIOR DESIGN

CBT Architects
110 Canal Street
Boston, MA 02114
617-646-5306
www.cbtarchitects.com

THEATER, ACOUSTICS, AV

Charcoalblue
150 West 28th Street, Suite 1504
New York, NY 10001
212-645-0790
www.charcoalblue.com

PRECONSTRUCTION ADVISOR

Walsh Brothers
210 Commercial Street
Boston, MA 02109
617-878-4800
www.walshbrothers.com

LIGHTING DESIGN

LAM Partners
84 Sherman Street
Cambridge, MA 02140
617-702-5957
www.lampartners.com

MEP/FP ENGINEER

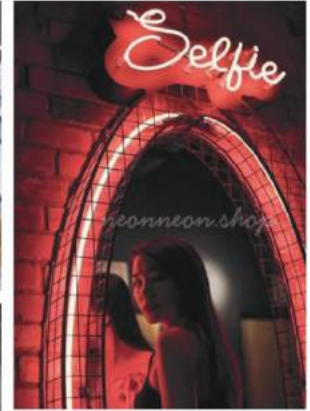
AWE Engineers
78 Blanchard Road, Suite 202
Burlington, MA 01803
781-652-8688
www.awe-e.com

CODE CONSULTANT

Code Red Consultants
154 Turnpike Road, Suite 200
Southborough, MA 01772
508-719-8316
www.coderedconsultants.com

DESIGN DIRECTION

- Create a safe haven that nurtures queer artists and provides opportunities for TTO to engage with incoming artists and the surrounding community
- Design with a combination of contrasting materials that feel raw, but tactile to illustrate the experimental nature a studio-like, artistic environment
- Incorporate highly saturated colors and dramatic lighting in a way that creates an immersive, queer experience
- Take a minimalist approach to internal spaces giving its artists more opportunity for expression



CAMP COUTURE



immersive experiences



curved forms



raw textures



moody environment



explosive color

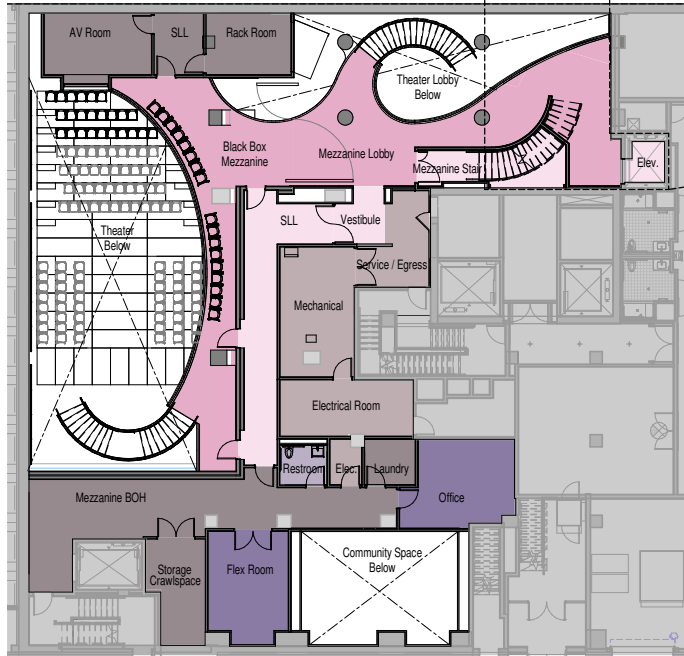


reflective surfaces

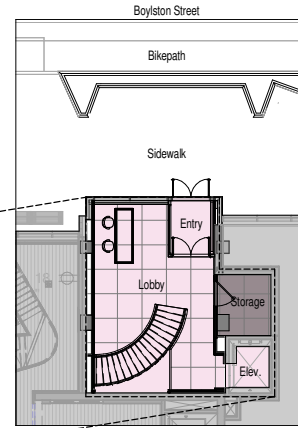


free expression

THE THEATER OFFENSIVE PLAN LAYOUT DRAWINGS



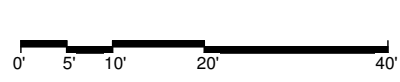
Level P1 - Mezzanine Plan



Level 01 - Lobby Plan

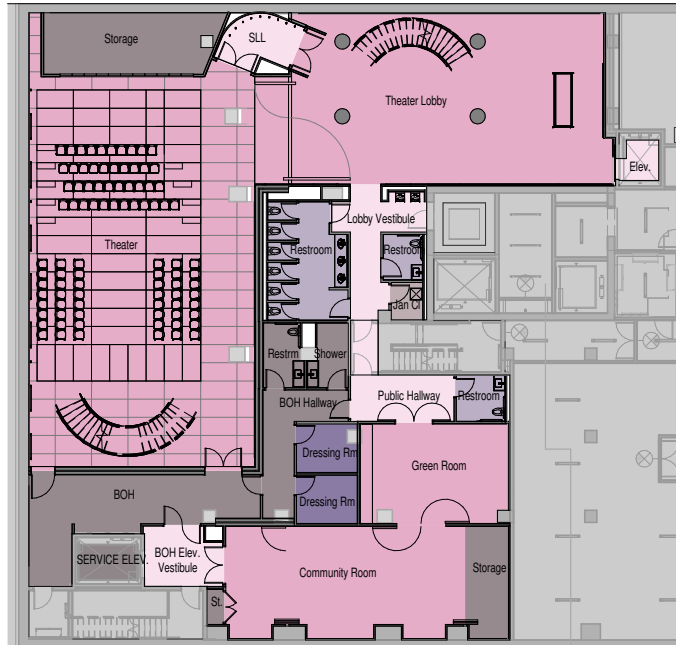
Program Spaces Legend

- THEATER GATHERING
- TTO / MEETING
- THEATER BOH
- THEATER CIRCULATION
- PATRON RESTROOMS
- CORE/SERVICE



THE THEATER OFFENSIVE

PLAN LAYOUT DRAWINGS



Level P2 - Black Box Theater Plan

Program Spaces Legend

- THEATER GATHERING
- TTO / MEETING
- THEATER BOH
- THEATER CIRCULATION
- PATRON RESTROOMS
- CORE/SERVICE



THEATER LEVEL



- █ Feature Wall
- █ Solid Railing
- Perforated Railing
- █ Immersive Zone



THANK YOU!

