



By Jon Moscone, Proponent of Prop S

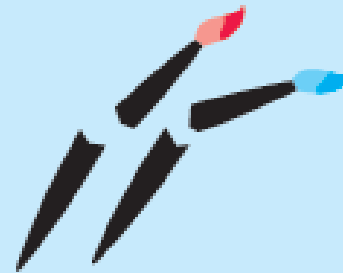


San Francisco's Hotel Tax was created to expand access to arts and culture, and provide housing for low-income families.

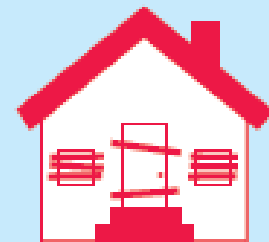
Slowly, this foundation was taken away, **leaving artists, cultural groups, and homeless families exposed.**

IN 2013, SPECIFIC ALLOCATIONS FOR THE ARTS AND LOW-INCOME HOUSING WERE **REPEALED**

\$300 MILLION
TOTAL LOSS IN FUNDS
IN THE LAST 11 YEARS



\$200+ MILLION
artists and arts
organizations lost



\$90 MILLION
low income
housing lost



WHY THIS MATTERS



1 IN 25 STUDENTS

in the San Francisco Unified School District is **homeless**.



70% DISPLACED

In 2015, the San Francisco Arts Commission surveyed 600 at risk local artists and found that 70% of them had already been displaced or were in the process of being displaced from their homes or workplaces.



San Francisco has the highest percentage of artists in the workforce of any city in the U.S.

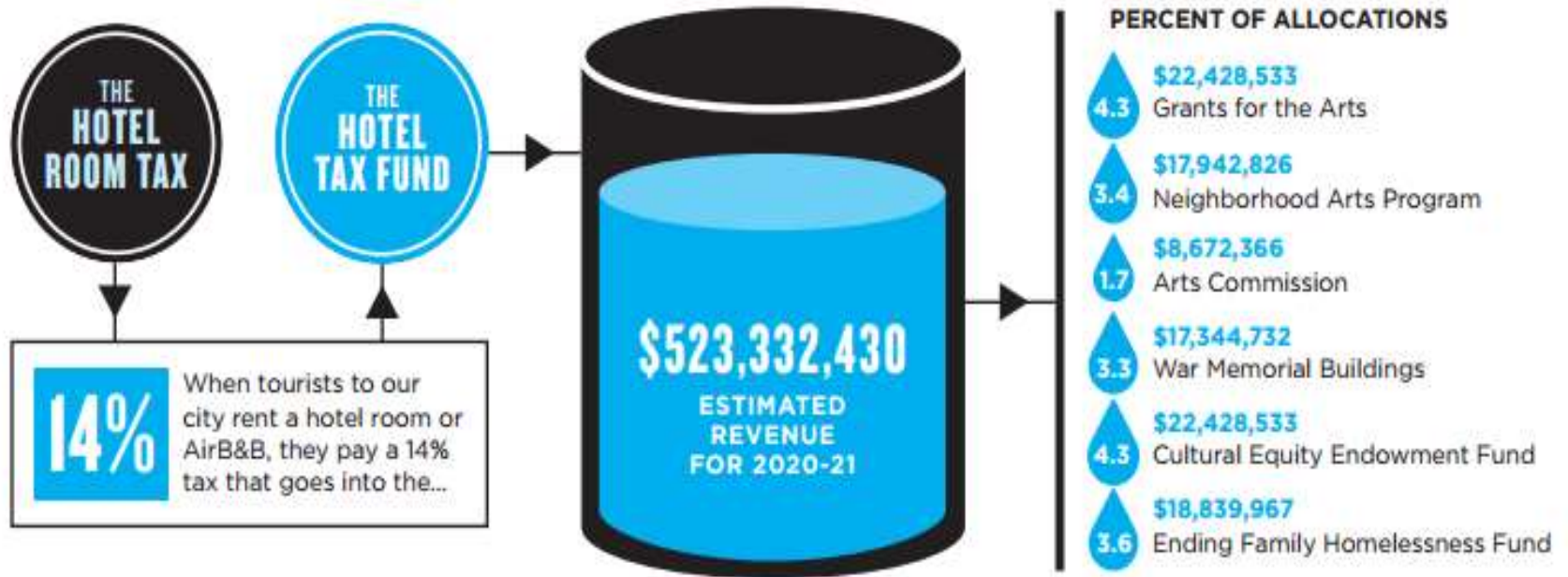
4.3%

This is not the San Francisco we love.



Without raising any new taxes, Proposition S will work to end family homelessness and restore funding for arts and culture in San Francisco.

IN 1961, THE HOTEL TAX WAS CREATED TO SUPPORT THE ARTS, AND LATER, LOW-INCOME HOUSING



Join us at www.bettersf.com to get involved and learn more.



Vote Yes on Prop S to **Save our Arts & Families:**

- Help end family homelessness by providing housing, shelter and supportive services for homeless and at-risk, low-income families.
- Fund individual artists, community organizations, non-profit art groups and to provide programs for underserved communities.
- Make art experiences more accessible and affordable for all.
- Support arts, cultural, and music programs for children and make arts more accessible and affordable for all San Franciscans.
- Stand with 70+ arts, culture, and homeless service organizations that have come together to secure and increase funding for arts, culture and homeless families.



Yes on Prop S is comprised of a **broad, unprecedented coalition committed** to creating a better San Francisco

ABD Productions
African-American Shakespeare Company
AfroSolo
Alonzo King LINES Ballet
American Conservatory Theater
API Cultural Center
ArtCare
ArtSpan
Brava! for Women in the Arts
Campo Santo
Center for New Music
Chinese Culture Center of San Francisco
Circo Zero
City Arts & Lectures
Coalition on Homelessness
Compass Family Services
Contemporary Jewish Museum
Council of Community Housing Organizations

Crowded Fire Theater Company
Curry Senior Center
Dance Brigade
Episcopal Community Services
EXIT Theatre
Exploratorium
GenRyu Arts
Golden Thread Productions
Hamilton Family Center
Homeless Emergency Service Providers Association
Homeless Prenatal Program
Hospitality House
Human Services Network
Monique Jenkinson
Museum of Craft & Design
Museum of Performance & Design
Museum of the African Diaspora
New Conservatory Theatre Center

ODC
Philharmonia Baroque Orchestra & Chorale
Post:Ballet
Presidio Performing Arts Foundation
Providence Foundation
Q Foundation: AIDS Housing Alliance SF
Quiet Lightning
Raphael House
Robert Moses KIN
Root Division
San Francisco Ballet
San Francisco Cinematheque
San Francisco Film Society
San Francisco Friends of Chamber Music
San Francisco Juneteenth
San Francisco Museum of Modern Art

San Francisco Opera
San Francisco Performances
San Francisco Symphony
SFJAZZ
SF Juneteenth
Small Press Traffic
SMUIN Ballet
Society for Art Publications of the Americas
SoMa Pilipinas
SOMArts
SRO Families United Collaborative
The Cutting Ball Theater
The Lab
Theatre Bay Area
Women's Audio Mission
Yerba Buena Center for the Arts
Yerba Buena Gardens Festival
Youth Speaks
Z Space



Yes on Prop S is also endorsed by a **wide range of elected officials, democratic clubs, and unions.**

State Senator Mark Leno
Assemblymember David Chiu
Assemblymember Phil Ting
Former Assemblymember Tom Ammiano
State Board of Equalization Member Fiona Ma
Supervisor Scott Wiener
Supervisor Eric Mar
Supervisor Jane Kim
Supervisor Norman Yee
Supervisor David Campos
San Francisco Tenants Union
Actors Equity Union
UNITE HERE Local 2 Hospitality Workers
Union
Stage Directors and Choreographers Society
Musicians Union Local 6
Theatre Communications Group

SEIU 1021
GLBT Historical Society
Human Services Network
San Francisco Homeless Emergency Service
Providers Association
San Francisco Democratic Party
San Francisco Latino Democratic Club
Harvey Milk Democratic Club
Richmond District Democratic Club
Americans for the Arts
Community Arts and Stabilizations Trust
California Arts Advocates
SFWPC
South Beach District 6 Democratic Club
D8 Progressive Democratic Club
Latin@ Young Democrats
San Francisco Young Democrats



Get involved today to help make a better San Francisco by voting **Yes on Prop S** to save our arts and families

We need 2/3rds of the vote to win in November so we need you to help today!

Go to www.bettersf.com to:

- Donate to the campaign
- Sign up to volunteer
- Learn more about Prop S



Thanks!

Join us at www.bettersf.com to get involved and learn more.